



Early Decisions: How Policymakers Think About Planning for Pre-K Initiatives

March 23, 2023

Welcome!

Early Decisions: How Policymakers Think about Planning for Pre-K Initiatives

Thank you for joining today's webinar!

Please keep microphone on mute, until discussion time later on.

Privately message Ashley Davison if you have any technical difficulties.

Today's webinar will be recorded and available to registrants with the slide deck.

Acknowledgements

The logo for the National Institute for Early Education Research (NIEER) features the acronym "NIEER" in a large, white, serif font, centered within a solid blue rectangular background.

NATIONAL INSTITUTE FOR
EARLY EDUCATION RESEARCH



AN INITIATIVE OF

the de Beaumont Foundation + Kaiser Permanente

Introductions

Today's Presentation Team

GG Weisenfeld

Josh Wallack

Emmy Liss

Ashley Davison

Preschool Policy Brief

Components to Consider When Planning City Preschool Programs

Authors: Emmy Liss, Josh Wallack,
GG Weisenfeld, Ellen Frede

<https://nieer.org/research-report/components-to-consider-when-planning-city-preschool-programs-require>

Preschool Policy Brief

Components to Consider When Planning City Preschool Programs

9 Components

- Governance & administration
- Financing & cost
- Eligibility & pace of scale
- Enrollment & outreach
- Structural program features
- Workforce
- Program standards & supports for program implementation
- Continuous improvement & evaluation
- Integration with other city services

Preschool Policy Brief

Components to Consider When Planning City Preschool Programs

Key Takeaways

- Investment and innovation for preschool programs is growing at the local level
- Various design choices have been made by city or county leaders across components
- There is no “right way” to design a local preschool program; numerous examples provide ideas for consideration

Panel & Discussion

Today's Panelists

Brooke Chilton Timmons

Management Analyst, Multnomah County Dept. of Human Services, Preschool & Early Learning Division

Rebecca Noecker

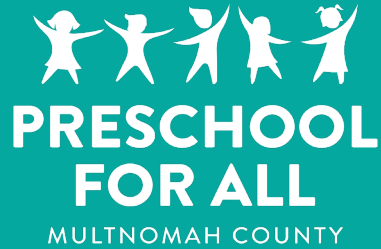
Councilmember, St. Paul, Ward 2

Denise Smith

Implementation Manager, Hope Starts Here Detroit

Kristin Spanos

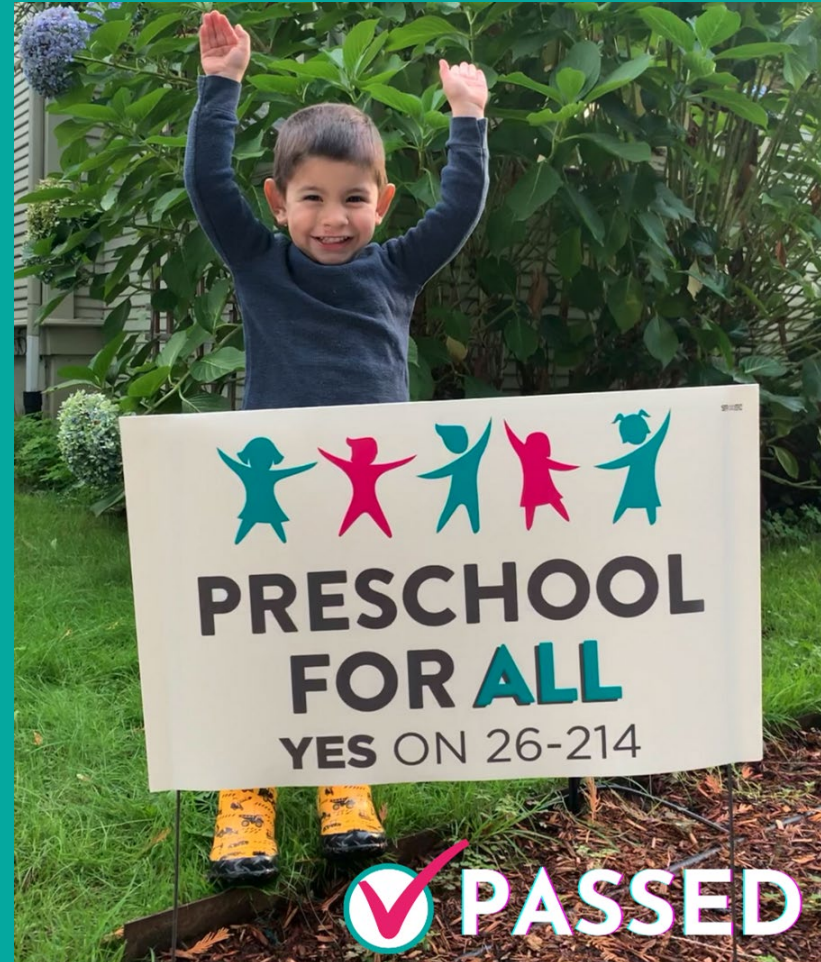
CEO, First 5 Alameda County



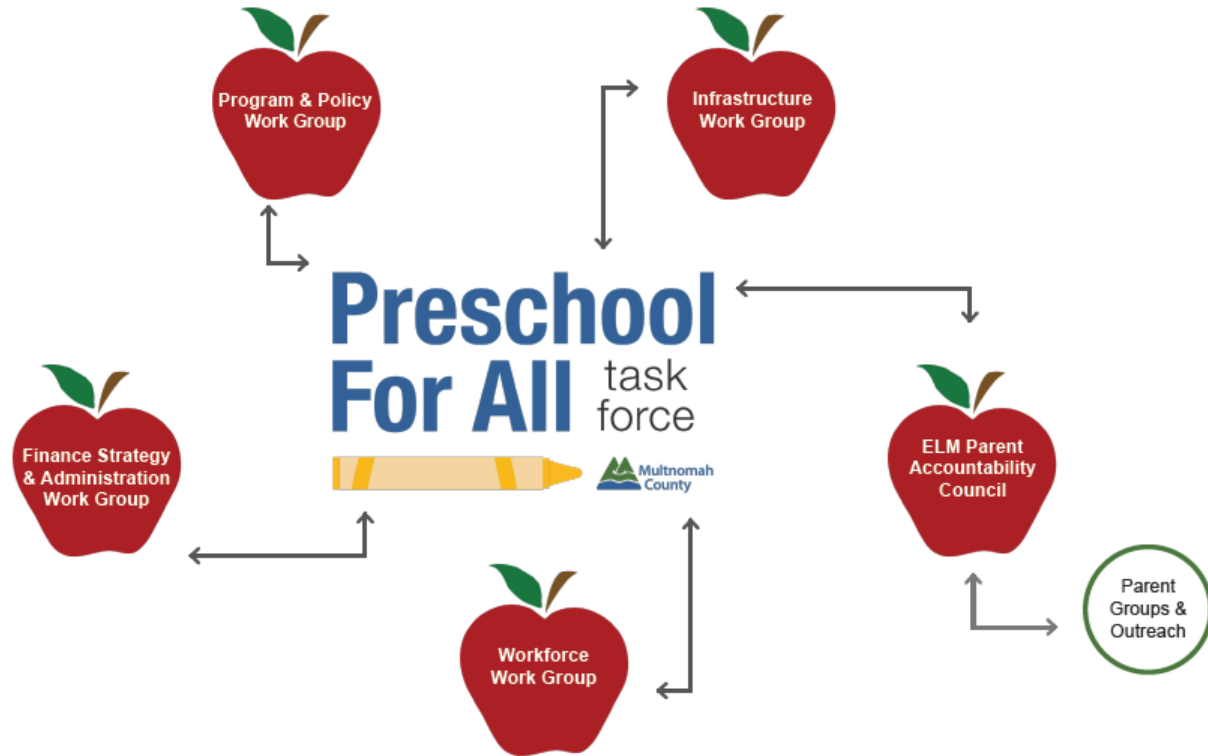
What: Free and voluntary preschool for all 3- and 4-year-olds in Multnomah County

How: Marginal tiered income tax on higher income earners who live and work in county

When: Passed Nov 2020 in Multnomah County with 64.09% YES



Community Based Policy Making



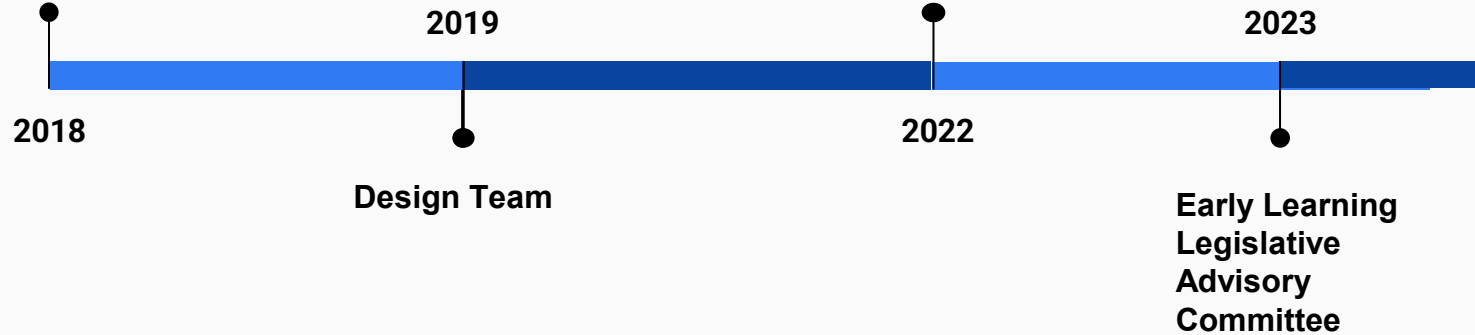


Key PFA Policies

- Prioritize children with the least access
- Center needs of family child care
- Raise educator wages
- Ban preschool suspensions and expulsions
- Stabilize infant/toddler care
- Invest in preschool facilities and workforce development
- Full 10-hour day of care

St. Paul Timeline

Blueprint



Key Recommendations of the Early Learning Legislative Advisory Committee

- New, dedicated, public revenue source - a special levy to be approved by voters that will increase property taxes over a period of time
- Mixed delivery - including Saint Paul Public Schools, Head Start and Early Head Start, licensed family child care, and child care centers. Should continue to explore how to support unpaid family, friend and neighbor care.
- Any scheduling option that meets families' needs, from part-time up to and including year-round, full- and extended-day care.
- Fully cover the cost of care for families at 185% federal poverty level and below. Families who earn more should be subsidized on a sliding scale.
- When fully funded, the program should serve all Saint Paul children ages 0-5.
- The program should be operated by the City of Saint Paul, via a new or existing city office or department.



Hope starts HERE
DETROIT'S **EARLY CHILDHOOD** PARTNERSHIP

When we uplift community-led priorities and coordinate cross-sector actions with shared accountability, we build the insight, leverage, and power needed to redesign systems that generate equitable access, quality and affordable early education and care for Detroit's youngest citizens and their families.

Detroit puts young children and families first!

Our Vision:

By 2027, Detroit will be a city that puts its young children and families first.



Detroit will be a city where **all children are healthy and thriving**, and have high quality experiences that help them grow and develop.



Detroit will be a city where **families feel supported** raising their kids and use their power to make sure their children have high quality early childhood experiences.



Detroit will be a city where the **professionals who care for our children are valued**, well-trained and respected.



Detroit will be a city with many high quality **spaces and places where children can learn**.



Detroit will be a city where **everyone understands that the first eight years of a child's life are important**, and that efforts to help our kids help all of us.



Detroit will be a city where the systems that affect early childhood have the **funding they need** to make an impact, and **work with each other** to do the most they can do.



Our Values:

Our work is guided by four important beliefs:

Equity

Every child in Detroit deserves the same chance to grow up and be successful.

Family-Focused

Healthy families mean healthy kids, so our work to make Detroit a better place for children must include families, too.

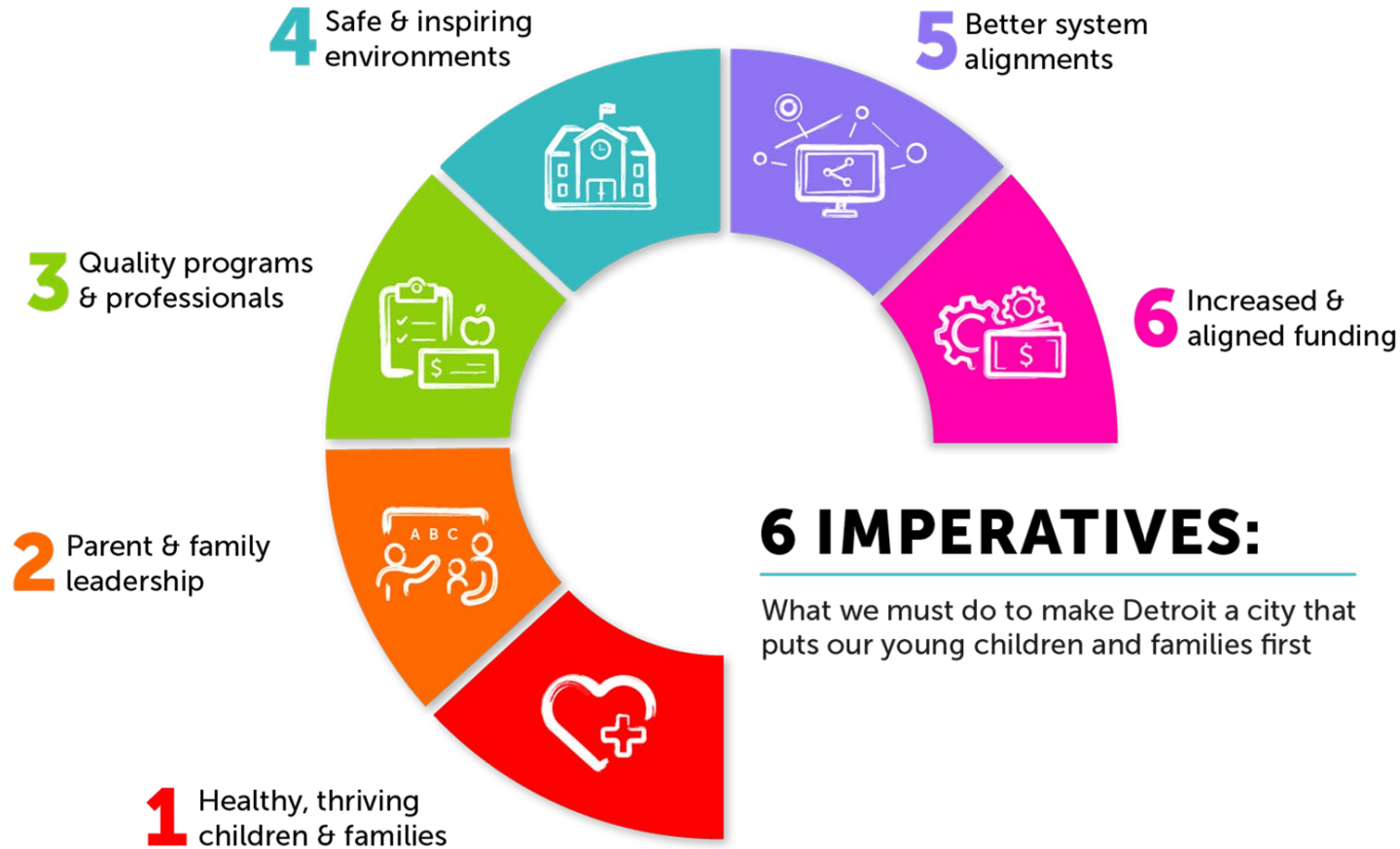
Proven Practices

There are great ideas in Detroit, and there are great ideas outside of Detroit. We can and should learn from and use both to create a path forward that is by and for our city.

Community Leadership

Every Detroiter has a role to play in making our city a great place for children. Achieving our vision will require everyone to roll up their sleeves and lead in some way.

Imperatives in Action



Increased & Aligned Funding

IMPERATIVE #6:

HEALTHY, THRIVING CHILDREN AND FAMILIES

IMPERATIVE #1:



PARENT & FAMILY LEADERSHIP

IMPERATIVE #2:

IMPERATIVE #2

Support parents and caregivers as children's first teachers and champions.

Strategy #3

Support the critical role family plays in making sure kids' first years are healthy and positive.

Strategy #4

Make the processes, programs, and systems that support young children and their families easier to use so they better meet families' needs.

Strategy #5

Build a team of family advocates and community champions to promote early childhood.

BETTER SYSTEM ALIGNMENT

IMPERATIVE #5:

SAFE & INSPIRING ENVIRONMENTS

IMPERATIVE #4:

HIGH QUALITY PROGRAMS & PROFESSIONALS

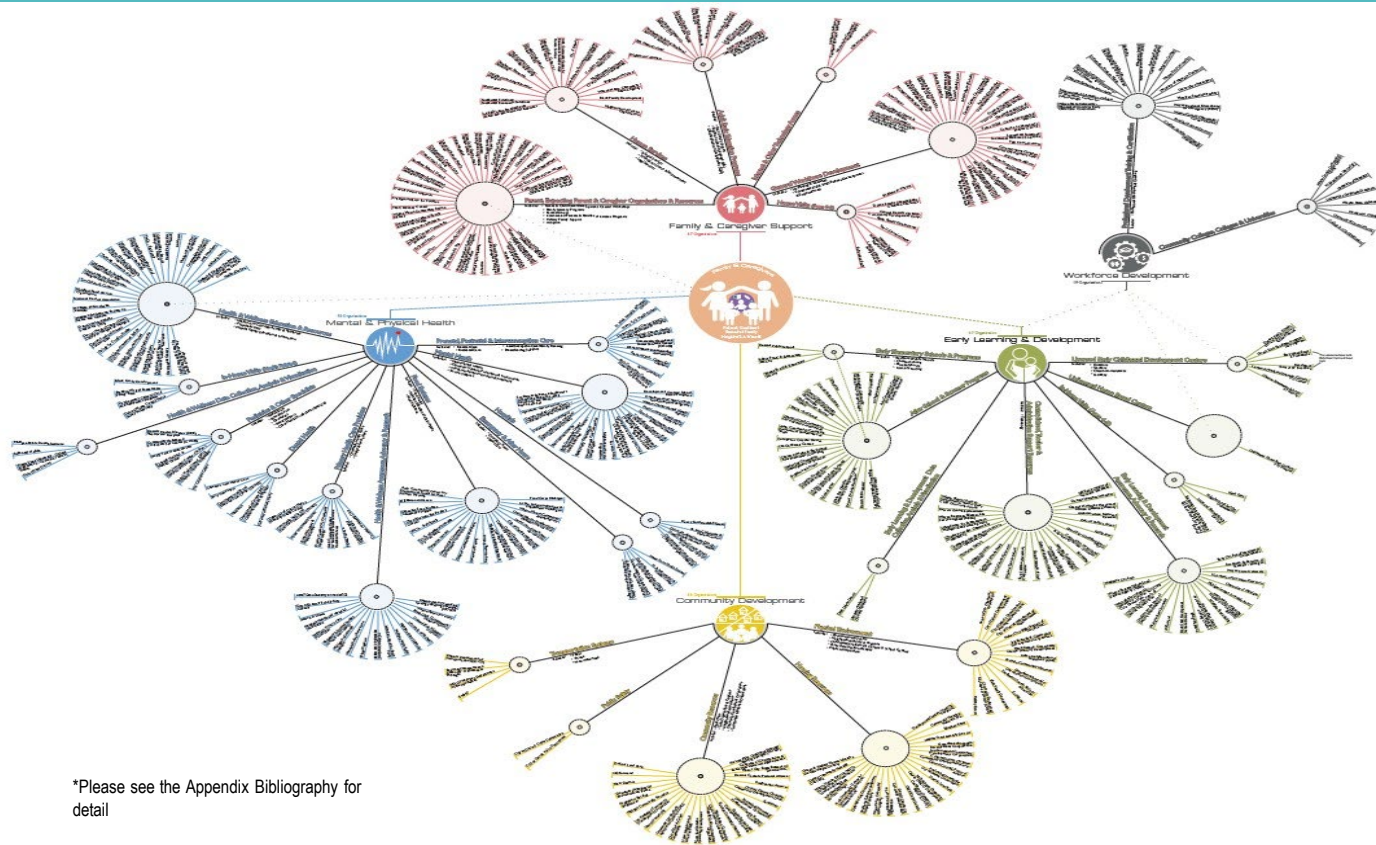
IMPERATIVE #3:

What Is Hope Starts Here?

Hope Starts Here is a connector of early childhood efforts in Detroit to mobilize a citywide commitment to support our youngest children and families, through a common vision, coordinated implementation, collective advocacy, and a shared infrastructure.

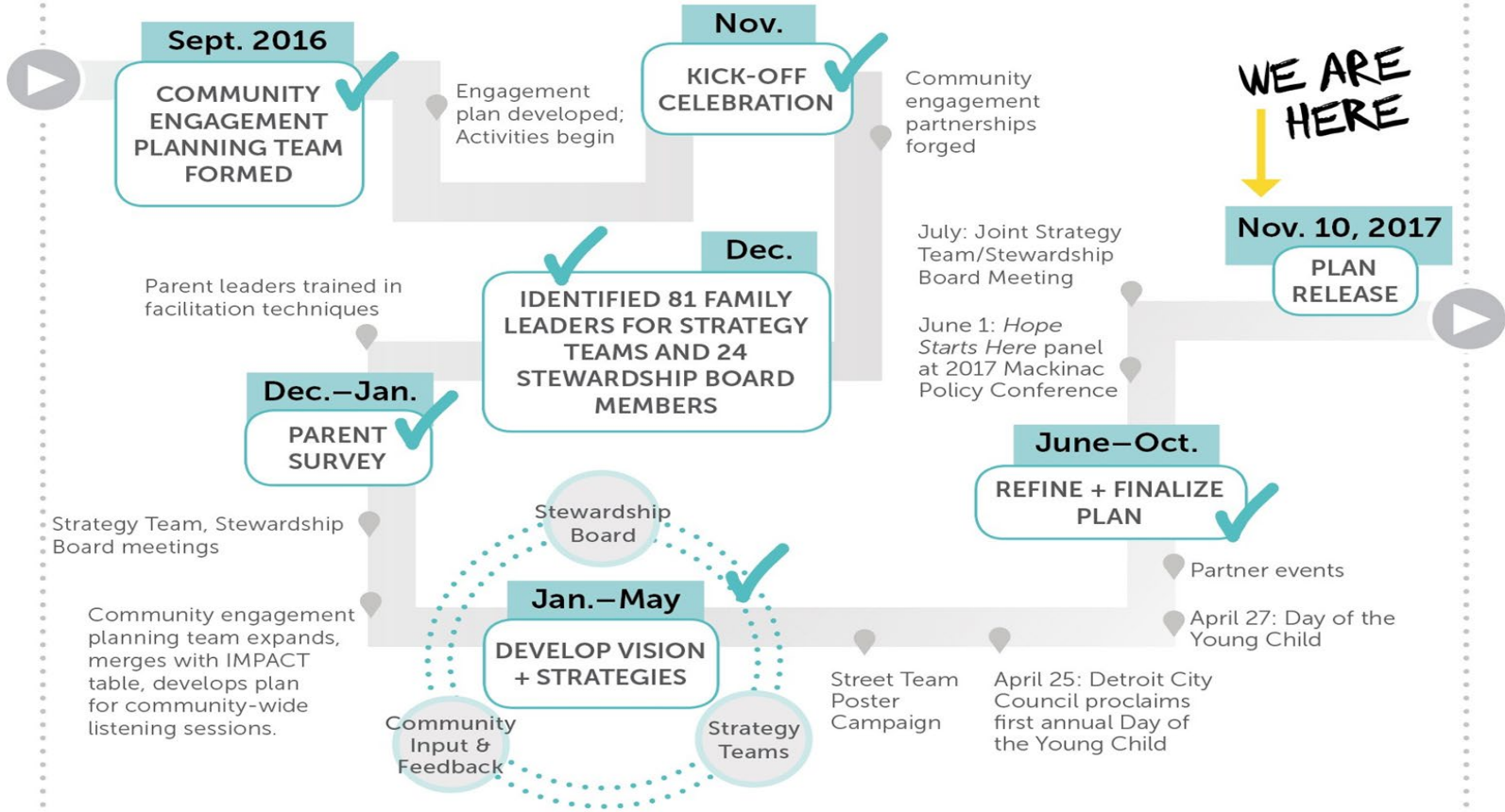
Complex, Interconnected Early Childhood System

More than 216 organizations serving children and families in 2017



*Please see the Appendix Bibliography for detail

Hope Starts Here Process Timeline



About Detroit Champions For HOPE (Helping Our Parents Empower) ↩

Detroit Champions for HOPE
is an early childhood advocacy
network for and by Detroit
parents and caregivers

OUR MISSION

WE TRANSFORM SYSTEMS TO
SUPPORT PARENTS AND
CAREGIVERS AS CHILDREN'S
FIRST TEACHERS AND
CHAMPIONS.

By 2027 we want
Detroit to be a City
that puts children &
families first

OUR GOAL IS TO REACH

20,000

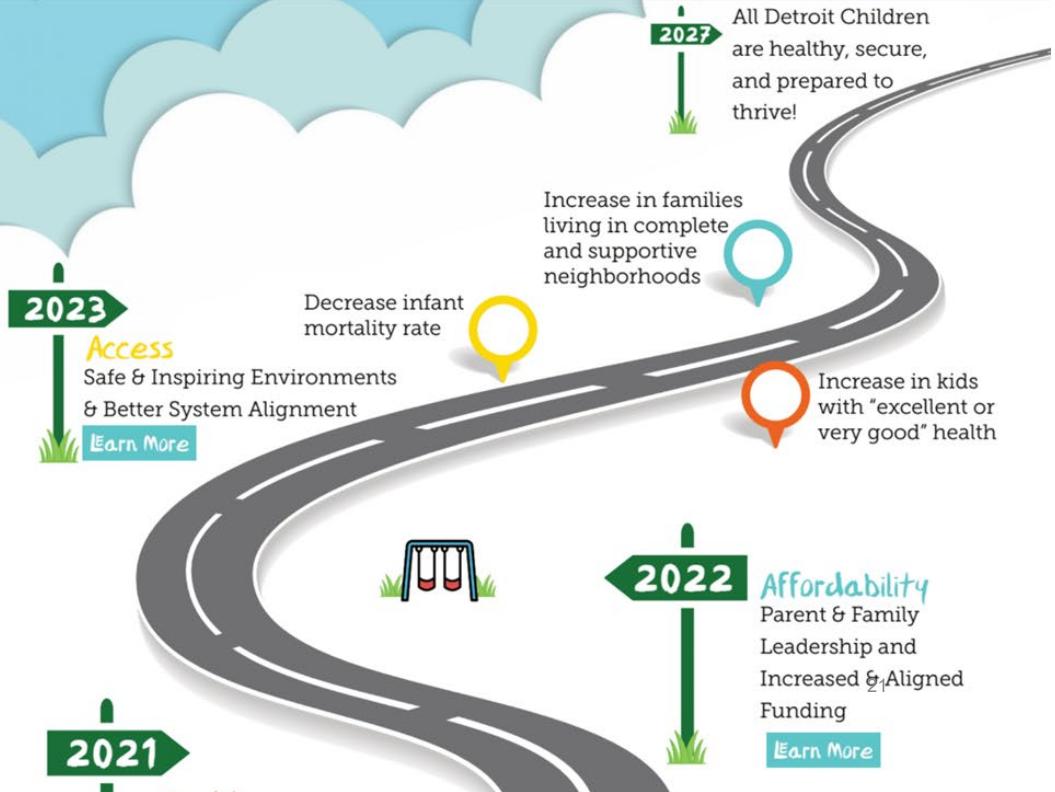
FAMILIES TO BE
CHAMPIONS FOR CHILDREN



Policy Roadmap

ROAD MAP

This Policy Road Map displays the current HSH Policy Agenda for the next three years. This road map was informed by and developed from the 26 HSH Policy Priorities. The current HSH Policy Agenda (2021-2022) include: Raising The Michigan's Child Care Subsidy Income Eligibility Threshold, Moving to Monthly Subsidy Contracts for Providers and Increase Reimbursement Rates, Creating & Implementing a Universal Screening and Referral Service System, and Developing a Cross-Sector Early Childhood Workforce Strategy (which deals with wages/benefits)



Governor Whitmer's Budget For Child Care Programs



PreK for all

Child care

Workforce

Building An **Early Childhood System Of Care**

First 5's role is to:



FUND organizations and initiatives that are mission- and vision-aligned, and part of a community-based, family-informed early childhood system.



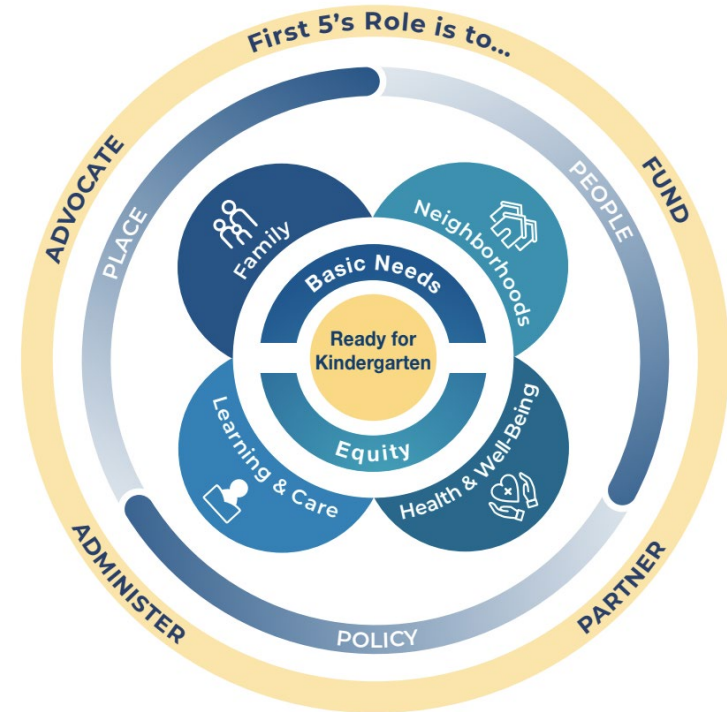
PARTNER with parents, caregivers, communities, early childhood providers, organizations, and public agencies in service to an accessible, effective, and responsive early childhood system.



ADMINISTER programs for young children and families that offer services, navigation, and care coordination; support and connections to resources; and training and capacity building for providers.



ADVOCATE to scale and sustain effective programs and for public policies grounded in equity and justice.



Expanding pre-K: Measure AA and Measure C



Parcel tax at the rate of \$198 per parcel for 30 years in Oakland, California.



A YES VOTE was a vote to amend the city charter to establish a parcel tax to fund education services for pre-K through college students and career readiness.



Measure AA was passed with **62% approval** on the November 6, 2018, election.



Half percent (0.5%) **sales tax** across Alameda County, raising an estimated \$150 million annually.



A YES VOTE was to implement a county sales tax to expand access to free and low-cost health care and emergency services in Alameda County and improve access to affordable child care, prioritizing high-need families.



Measure C was **passed by a majority of Alameda County** voters on March 3, 2020.



Planning for Organizational Growth



- Operations
- Finance
- Human resources
- Strategic planning
- Communications
- Technology
- Legal

- ECE sector
- Parents
- Community organizations
- Stakeholders
- Elected officials
- System partners

- Place-based strategies
- Family partnership
- Health and well-being
- Data & policy advocacy



QUESTIONS

**Please share questions or comments in
the chat.**

**The moderators will select questions to
ask our panelists.**

QUESTIONS

**Any other questions or comments for
our panelists?**

Closing

Up Next: Join us April 20th 3pm ET for Making Government Work For Kids: Governance Models For Local Pre-K Programs

Join NIEER for our FREE webinar, “Making government work for kids: governance models for local pre-K programs,” on Thursday, April 20th from 3-4:15PM ET. We'll be in conversation with leaders from Denver, New Orleans, and San Antonio about how they have approached governance for their early childhood programs and what lessons they might share with other program leaders.

Register at go.rutgers.edu/77xh7cs1

Selected Resources

Frede, E., Brooks, J.L., Weisenfeld, G.G., & Bryant, C. (2021). Taking stock of city pre-K quality policy and practice: A framework. National Institute for Early Education Research. <https://www.cityhealth.org/pre-k-self-assessment/>

Garver, K. (2021). City funding strategies to support public preschool programs. National Institute for Early Education Research. <https://www.cityhealth.org/prek-funding-strategies>.

Liss, E., Wallack, J., Weisenfeld, G., & Frede, G. (2023). Components to consider when planning city preschool. https://nieer.org/wp-content/uploads/2023/02/City-Preschool-Program-Planning_Feb-FINAL.pdf

Pre-K in American cities. (2019). National Institute for Early Education Research & CityHealth. <https://nieer.org/wp-content/uploads/2019/01/Pre-K-Report-Final.pdf>

Let's Connect!



AN INITIATIVE OF

the de Beaumont Foundation + Kaiser Permanente



@city_health

cityhealth.org/join-us



NATIONAL INSTITUTE FOR
EARLY EDUCATION RESEARCH



@PreschoolToday

nieer.org



Josh Wallack &
Emmy Liss

joshwallack@hotmail.com
emmylis@gmail.com